

School holidays could be changing - your views wanted!



- Want to support your child's learning and achievement at school?
- Find it difficult to get childcare over the long summer holidays?
- Prefer to take your family on holiday at cheaper off-peak times?

Nottingham City Council is considering making changes to school holiday times and would like to know your views.

Traditionally schools take a six week holiday in the summer, two weeks off at Christmas and Easter, and then a week off at half term three times a year.

Under a new proposal, starting from September 2012, children would have the same amount of time off in total, but the holidays would be spread more evenly throughout the year.

What are the new proposals?

- The summer holiday would be shortened from six weeks to four weeks - which would make it easier for parents to find childcare.
- Schools would have five terms instead of three terms. There would be a two week holiday between each term - which would make it easier for families to go on holiday at cheaper 'off peak' times of the year.

Why would we make these changes?

We believe the new proposal could help more children to achieve at school.

- Over long summer holidays children can 'get out of the habit' of learning - they can even forget what they've been taught. So a shorter summer break could help more children to remember their lessons and return to school in the autumn ready to learn.
- The new proposal would create terms of more equal length - which would help teachers to plan and deliver their lessons more easily.
- Providing regular two week holidays throughout the year would give families more chances to go on holiday at cheaper times of the year. This means school attendance will improve as fewer parents will take their children out of school during term time.



How would the proposed holidays compare to the current holidays?

Below are two calendars. Calendar One shows the current pattern of school terms and holidays. Calendar Two shows the new proposals.

Calendar One

This calendar shows the current term times and holidays.

Autumn Half Term 1	1 Week Autumn Break	Autumn Half Term 2	2 Week Christmas Break	Spring Half Term 1	1 Week Spring Break	Spring Half Term 2	2 Week Easter Break	Summer Half Term 1	1 Week Summer Break	Summer Half Term 2	6 Week Summer Break
--------------------	---------------------	--------------------	------------------------	--------------------	---------------------	--------------------	---------------------	--------------------	---------------------	--------------------	---------------------

Calendar Two

This calendar shows the proposed term times and holidays. The summer holiday has been shortened from six weeks to four weeks. There are regular two week breaks throughout the year. These two week breaks give families more opportunities to go on holiday at cheaper 'off peak' times of the year.

August to October Term 1	2 Week Autumn Break	November to December Term 2	2 Week Christmas Break	January to March Term 3	2 Week Spring Break	March to May Term 4	2 Week Summer Break	June to July Term 5	4 Week Summer Break
--------------------------	---------------------	-----------------------------	------------------------	-------------------------	---------------------	---------------------	---------------------	---------------------	---------------------

Please note:

- In 2012 there will be four Bank Holidays which will take place during term time, but are not displayed in this presentation.
- Two INSET days for teaching staff are proposed to be fixed across all schools with each school able to choose when to hold a further three INSET days.
- The school year starting in September 2012 will be a transition year with only one week break for the Autumn Half Term. From September 2013 all half term breaks will be two weeks long.
- For details of the precise holiday dates for 2012/13 and 2013/14 please visit the website www.mynottingham.gov.uk/terms email sot@nottinghamcity.gov.uk or call 0115 876 4622.



Frequently Asked Questions

1. Will there still be the same amount of days off for pupils?

Yes, the total number of days off will not change.

2. Is this a change to teachers working days?

No, teachers will still work for 195 days a year in school.

3. Why do we have a long six week summer holiday in the first place?

School holiday times were originally set when children were needed to help in the fields harvesting crops over the summer. This is obviously not needed anymore and a shorter summer holiday could bring many benefits.

4. Will families be able to take cheaper holidays?

Quite possibly! Holiday prices are obviously not in the control of Nottingham City Council, but the new proposal would give families the chance to take a two week break when previously the break was only one week. Some of these two week breaks also fall at 'off peak' times of the year when holidays are traditionally cheaper.

5. Will the academies have the same holidays?

Wherever possible Nottingham City Council works together with academy schools to ensure school terms and holidays follow similar dates.

6. What are INSET days?

INSET is an acronym for "in-service training" days. There are five INSET days each school year, which are currently set by schools.

7. Who are you consulting with?

We're consulting with a very wide range of people and organisations. We're using the City Council's website, Facebook, Twitter and direct emails to business organisations, letters to pupils and their parents/carers, governors, school staff, and professional colleagues like the emergency services.

8. How will the decision be made?

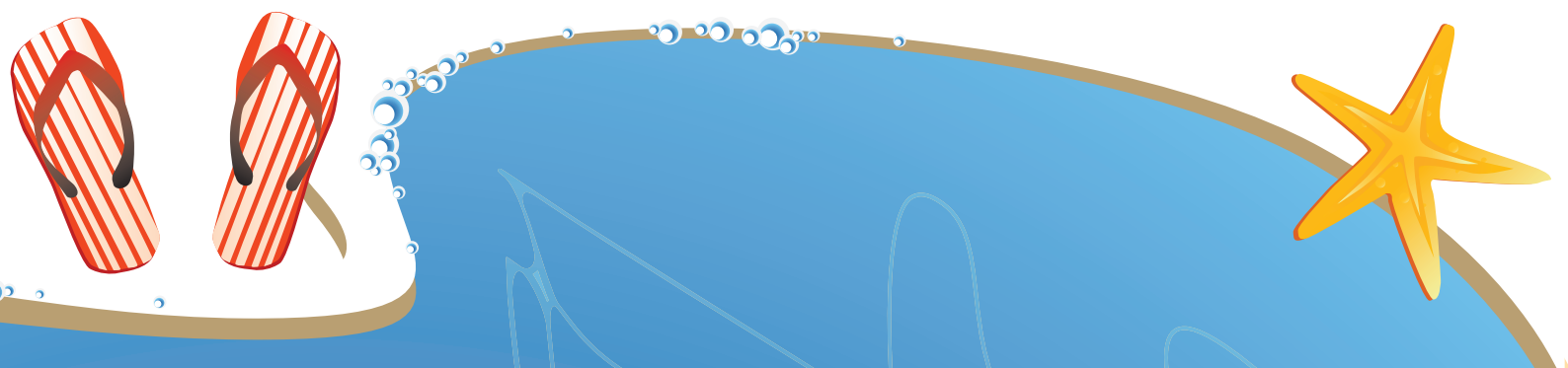
The results of this consultation will be considered at the City Council's Executive Board in October 2011. Schools will be informed about the Executive Board's decision and it will also be published on the City Council's website.

9. What is Nottinghamshire County Council doing?

The County Council have adopted the traditional three-term model for 2012/13. They will look at the findings of this consultation to inform their own consultation next year.

10. If the proposed model is adopted, will it always be in place or could it change back?

Nottingham City Council will monitor and review the effectiveness of the new proposal. Every school year Nottingham City Council will consult with Nottinghamshire County Council, Trade Unions and Head Teachers about terms and holidays. The City Council will always seek to maintain consistency wherever possible.



Want to know more?

Come along to one of our information events taking place near you:

- 13th July 6pm - 8pm Djanogly City Academy, Gregory Boulevard, Hyson Green, NG7 6ND
- 18th July 2pm - 3.30pm Dovecote Primary School, Greencroft, Clifton, NG11 8EY
- 19th July 6pm - 8pm Top Valley School, Top Valley Drive, Top Valley, NG5 9AZ

For further information you can also visit www.mynottingham.gov.uk/terms
email sot@nottinghamcity.gov.uk or call us on **0115 876 4622**.

Let us know your views

At school - if you have a child at school simply return this form to the school for us to collect by 18th July.

At an information event - come along to one of the events above.

By post - post this form to School Terms and Holidays Consultation, School Organisation Team, LH Box 6, Children and Families Service, Loxley House, Station Street, Nottingham, NG2 3NG by 9th September 2011.

Online - you may find it quicker and easier to take part in our online questionnaire simply visit www.mynottingham.gov.uk/terms by 9th September 2011.

1. Do you support the overall principle of introducing the new model of school terms and holidays from September 2012?

- Yes No No View

2. Do you have any comments? _____

About you - It will help us to analyse results if we know more about you (all information supplied will be treated as strictly confidential).

3. What is your home postcode? _____

4. Are you responding as? TICK ALL BOXES THAT APPLY

- A parent/carer of pupil/student(s)
 A school governor
 A member of school staff
 A pupil/student
 A union representative
 A business
 Other, (please specify) _____

5. If you are a member of school staff, please state in what capacity? _____

6. Please state the name of the school you have a relationship with. _____

7. To which of these ethnic groups do you consider you belong?

- White - British White - Irish White - European White - Other
 Mixed - White & Black Caribbean Mixed - White & Black African Mixed - White & Asian
 Mixed - Other Asian - Indian Asian - Pakistani Asian - Bangladeshi
 Asian - Other Black - Caribbean Black - African Black - Other Chinese

Any other ethnic group, please state _____

Thank you for completing this survey



Nottingham
City Council